

继续教育周刊

CONTINUING EDUCATION WEEKLY

总第225期





Contents



2022-2023

2

6

9

16

18

19

jxjzk@163.com



2022-2023

2023-5-4

4 14

2022-2023

北京大學
CONTINUING EDUCATION WEEKLY









2023-5-8

5 6

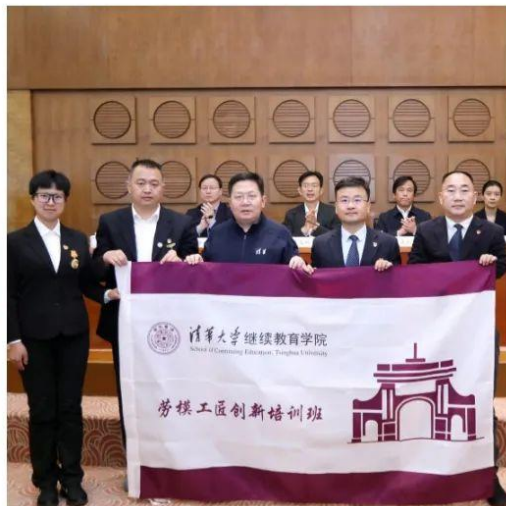
112

133

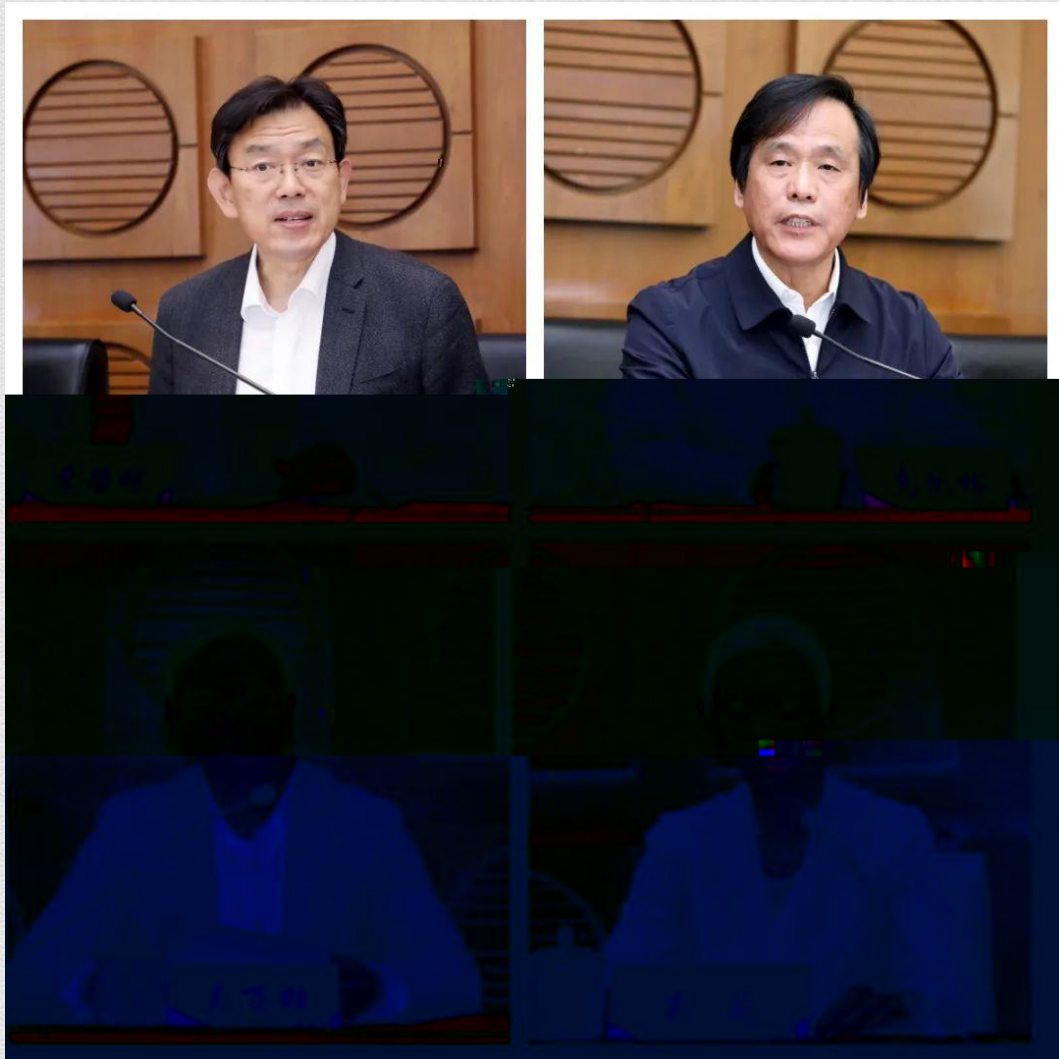
112



CONTI



北京
UNIVERSITY
CONTINUING





3D

2023-4-27



北京教育省周刊
CONTINUING EDUCATION WEEKLY

20
20 80

19

1900

31.4

8.3

7.6

6

18

42

19

60

19



25

1917

21

2003

21

4.0

4.0

20

50

500

1/5

200

1/4

2002

50.99%

50

2002



87%
WCU

2008

1976

1968

1969

Recurrent Education

21

2011 11

National Foundation Skills Strategy for Adults

15 64

2008



Gender Equality Bonus

16

3000

18

19

20

2018

15

2022

5 100

2021

2030

10

2017 9

2021



1905 1960 10 22
1970 1982 11.7%
15.8% 20 60
1977 8.02% 1870 1916
7 1990 3530
GDP 6.8%
GDP 7%

20 90
2000

Australian Government Quality Teacher Program, AGQTP

21

2011



20 90

21

PISA

PISA

2000

2000

2016 6

2025

2025

2014

2019

2019

2024

2011

DFAIT

继续教育周刊
CONTINUING EDUCATION WEEKLY



2023-5-5

北京大學
CONTINUING EDUCATION WEEKLY

3

30 50

10

3

12

8

15



3

30

3

北京继续教育周刊
CONTINUING EDUCATION WEEKLY



北京大學教育周刊
CONTINUING EDUCATION WEEKLY

G724



https://kns.cnki.net/kcms2/article/abstract?v=3uoqIhG8C44YLTlOAIrKu87-SJxoEJu6LL9TJzd50nf95gSYwIYxuZhMkhl3nvWRdhgwgoKKwJEswNDzn8MzB_WgKqaUYrH&uniplatform=NZKPT

D262.3

https://kns.cnki.net/kcms2/article/abstract?v=3uoqIhG8C44YLTlOAIrKibYIV5Vjs7ioT0BO4yQ4m_mOgeS2ml3UBqcQ3GrB7dUOT4EgrUtx-Q-dhoccQYoQeCX4kwBkjRE&uniplatform=NZKPT